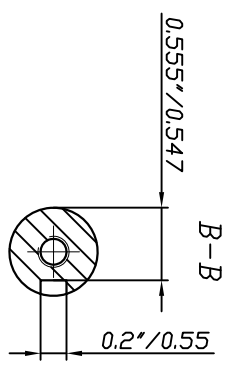
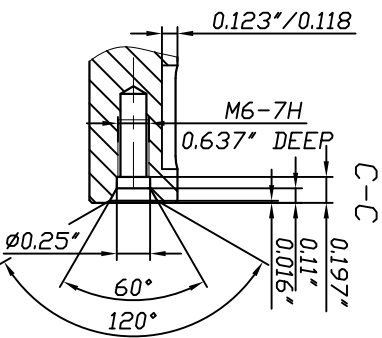
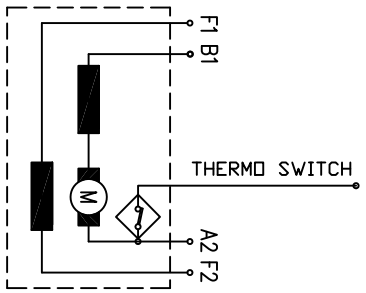


**KOSTOV 11" 168V-SepEx**  
R20-31944

rated power	36 kW
rated voltage	168 V
rated current	265 A
rated speed	5600 min <sup>-1</sup>
operation mode	S2-60min
excitation	Indep
protection	IP 21
insulation	H
interpoles	YES
weight	79 kg
length L	rev
char. curve	rev
rotation	rev



<b>KOSTOV</b>	KOSTOV 11" 168V-SepEx
<b>MOTORS</b>	excit. Indep
	IP 21 insulation H
	rpm 5600 kW 36 A 265 V 168 duty S2-60 min
	www.kostov-motors.com



Rotation (viewed from drive end)  
 CCW/ Connect D2 to A2; "+" to D1 and "-" to B1  
 CW/ Connect D1 to A2; "+" to D2 and "-" to B1  
 Coating: black

<b>KOSTOV</b>	Balkancar
<b>MOTORS</b>	"G. Kostov" JSC
	13.07.2009
	Rev.