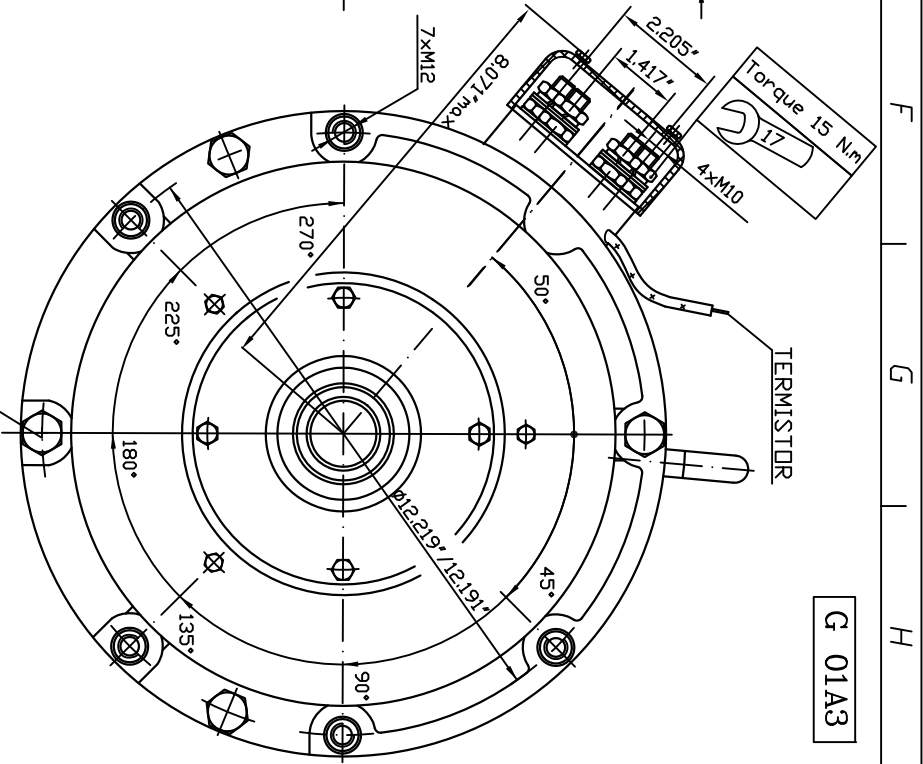
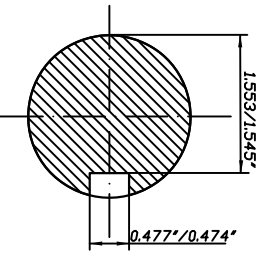


KOSTOV 13" 250V Insulation Class H
R21-32469

Duty cycle	Volts	Amps	RPM	KW	HP	Peak HP	Torque
S2-60min	185	315	3400	50	66.7	205	140
S2-60min	212	315	3900	57	76	235	140
S2-60min	240	315	4450	65	86.7	270	140

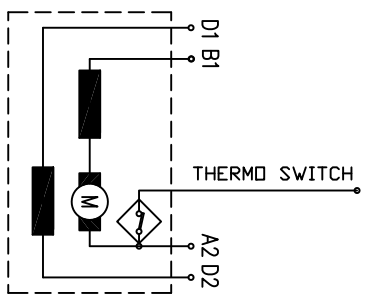


G 01A3

Coating: black

- rated power 65 kW
- rated voltage 240 V
- rated current 315 A
- rated speed 4450 min⁻¹
- operation mode S2-60min
- excitation protection IP 21
- insulation class H
- interpoles YES
- weight 140 kg
- rotation rev

SEE MOTORS KOSTOV 13" 250V
 exc. series S2-60 min
 IP 21 Insulation H
 kW 65 A 315 V 240
 rpm 4450 kg 140 S.N.
 www.kostov-motors.com



SEE MOTORS Balkancar
 "G. Kostov" JSC
 18.02.2010
 10.02.2010
 Rev.